



# GLEDOPTO

## INDOOR PRODUCT PRO

### User Instruction



#### Features:

Gateways/hubs Gledopto zigbee products Directly work with: HUE, Amazon echo plus, SmartThings, Homee etc  
Via Hue gateway, can work with google home, all other alexa devices

#### App work with Hue gateway:

Hue, hue essential, hueparty, hue Disco, iConnectHue, Hue Widget, Light DJ, etc

#### Work with Home Assistant:

<http://bitly.ws/dELh>

#### Work with Homekit:

<http://bitly.ws/ejZY>

#### Sync effect with screenbloom:

Sync your lights with movies, music, and games, Enjoy the lighting effect which synchronizes with the plot of the picture immediately, and experience the more delicate atmosphere lighting effect.

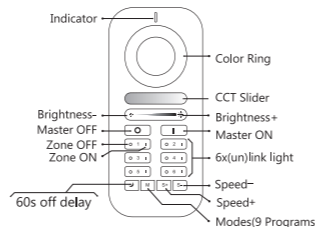
#### How to sync?

Please follow this website: <http://www.screenbloom.com/>  
Sync Show Demo: [https://youtube.com/zjtJMy\\_774](https://youtube.com/zjtJMy_774)

Q&A or more info, please go to: [www.gledopto.com](http://www.gledopto.com) or email to [sales@gledopto.com](mailto:sales@gledopto.com), or [https://www.reddit.com/r/Gledopto\\_Support](https://www.reddit.com/r/Gledopto_Support)

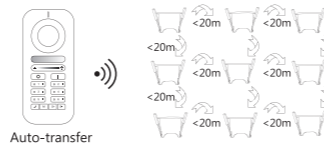
#### RGB+CCT Remote Control (GL-RC-006Z)

This manual describes RGB+CCT remote control used for our RGB+CCT products  
Remote control can control the LED lights up to six different Zones, change the color, dim/brighten the lights, warm/cool white, different programs. In this manual, you will learn.



#### Battery Installation

Please take the remote control and carefully press the battery cover and push it away in a downward motion. Install two AAA batteries, exactly match the negative (-) pole of each battery to the largest spring. Don't touch the color ring when you install the batteries. Place the battery cover back and install tightly.



EC	REP
----	-----

**LED-Trading Tobias Ebert**  
Schoeneicher Str. 42, Schoeneiche b. Berlin, Germany, 15566  
0049 30 641 689 17 [info@led-trading.de](mailto:info@led-trading.de)

#### How to link & use with remote control

1. Within 3 seconds after the light power on, click the "on" button in the group to perform code matching. The LED light turns green means successful code matching.
2. Long presses the "off" button of the remote control to enter the night mode, and the brightness and color can still be adjusted at this time.
3. Long presses the small moon key to enter the 60 seconds delay shutdown state.
4. Short press M key to switch modes.

#### How to unlink

1. If the LED connected to ZigBee hub, short press 5 times the key "ON" of remote within 3 seconds after the light powered on, and the LED will blink 3 times under existing color.
2. If the LED not connected to ZigBee hub, short press 5 times the key "ON" of remote within 3 seconds after the light powered on, and the LED will blink 3 times until fully bright.

#### Mode description

- Mode 1: Static warm light (warm light alone)  
Mode 2: Static white light (cold light and warm light are equally bright)  
Mode 3: Static cold light (cold light alone)  
Mode 4: Static red light  
Mode 5: Static green light  
Mode 6: Static blue light  
Mode 7: RGB fade in fade out (Color fade in fade out from red to green, then to blue, then to red, and so on, speed adjustable.)  
Mode 8: RGB flash (Color flash from red to green, then to blue, then to red, and so on, speed adjustable.)  
Mode 9: Color breathing (In this mode, the brightness of current color will cycle from from 100%-0%, then from 0%-100%. At the same time, you can switch the color and have a cycle repeatedly. Pressing switch /mode button to exit this mode.)

#### How to link & use with zigbee hub

These devices works with many ZigBee Light Link /ZigBee 3.0 Gateways like Philips Hue, Amazon Echo Plus or SmartThings.

#### Installation:

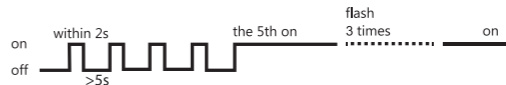
1. Turn off the Power.
2. Plug in the Bulb.
3. Now you can connect it with the gateway.

#### Connection with Gateway:

1. Start the device searching on the ZigBee Light Link/ZigBee 3.0 Gateway, it could take some time. If the Gateway does not find the device, plug power off/on or make a reset.
2. After finding the device, the light will turn green, then you can save it to the rooms/groups.
3. Now you can use the device.

#### Reset:

1. Switch on your device.
2. Now switch off within 2 seconds.
3. Wait for more than 5 seconds.
4. Repeat off/on five times.
5. Reset is done when the device is switched on in the fifth time and the LED light will flash for 3 times.



#### Compability Chart

Gateways	Philips Hue	Amazon Echo Plus	Smart Things	Tuya	Conbee	Homey	Homee
Item	①	②	③	④	⑤	⑥	⑦
RGB	Yes	Yes	Yes	Yes	Yes	Yes	Yes
CCT	Yes	Yes	Yes	Yes	Yes	Yes	NO
BRIGHTNESS	Yes	Yes	Yes	Yes	Yes	Yes	Yes

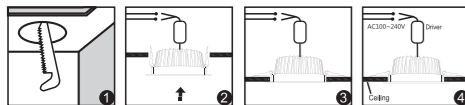
\*\*\*

①②③④⑤⑥ are already tested by GLEDOPTO, ⑦ are from our customers, just for your information, not verified by GLEDOPTO.

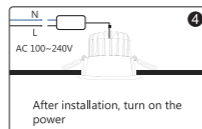
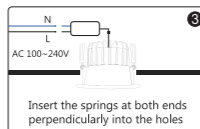
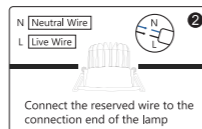
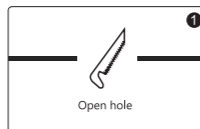
## RGB+CCT Downlight

Picture			
Model NO.	GL-D-003P	GL-D-004P	GL-D-005P
Power	6W	9W	12W
Size(mm)	114x45		160x60
Hole Size	100~100mm	100~100mm	140~150mm
Light efficiency	95LM/W	85LM/W	100LM/W
Luminous Flux	470~570LM	600~750LM	1000~1200LM
Beam Angle	120°		
CRI	>80		
Lifespan	50000hours		
Material	Aluminum+PC Cover		
Input Voltage	AC 100~240V		
Color temperature	2200~6500K		

1. Please open the hole on the ceiling according to the correct size of Diagram 1.
2. Push in the two spring elements, make sure that they are deployed and anchored on the back of the ceiling Diagram 2 and 3.
3. Connect the driver properly according to the wire connection Diagram 4.

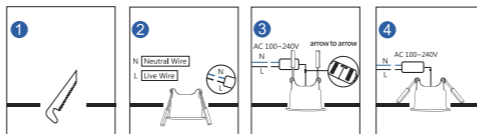


Picture		
Model NO.	GL-D-006P	GL-D-007P
Power	6W	12W
Size (mm)	93x66x65	113x68x78
Hole Size	80mm	95mm
Light efficiency	60LM/W	67LM/W
Luminous Flux	280~350LM	660~800LM
Beam Angle	60°	
CRI	>80	
Material	Aluminum+PC Cover	
Input Voltage	AC 100~240V	
Color temperature	2200~6500K	

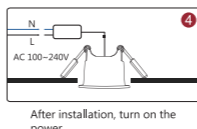
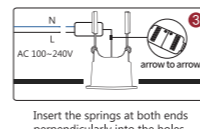
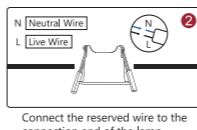
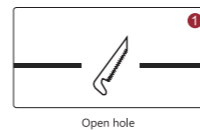


Picture		
Model NO.	GL-D-001P	GL-D-002P
Power	6W	
Size(mm)	71x52x52	88x67x57
Hole Size	60mm	75mm
Light efficiency	52LM/W	70LM/W
Luminous Flux	270~370LM	350~450LM
CRI	>80	>90
Beam Angle	60°	
Lifespan	50000hours	
Material	Aluminum+PC Cover	
Input Voltage	AC 100~240V	
Color temperature	2200~6500K	

1. open hole.
2. Connect the reserved wire to the connection end of the lamp.
3. Insert the springs at both ends perpendicularly into the holes.
4. After installation, turn on the power.



Picture		
Model NO.	GL-D-009P	GL-D-010P
Color	white	black
Power	12W	
Size(mm)	102x84x57	
Hole Size	90mm	
Light efficiency	65LM/W	
Luminous Flux	660~800LM	
CRI	>80 / >90	
Beam Angle	60°	
Input Voltage	AC 100~240V	
Color temperature	2200~6500K	
Material	Aluminum+PC Cover	

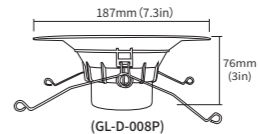


## RGB+CCT Downlight E26

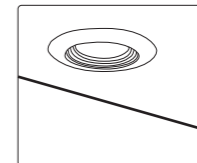
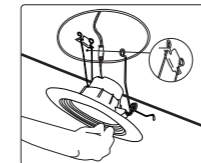
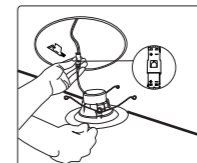
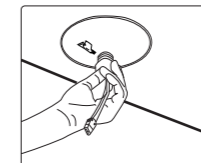
Power: 9W  
CRI: >80  
Hole Size: 153mm (6in)  
Light efficiency: 76 LM/W  
Luminous Flux: 580~700LM

### Parameter

PF: 0.5  
Lifespan: 50000hours  
Beam Angle: 120°  
Material: Aluminum+PC Cover



SDCM: <5  
Input Voltage: AC 100~240V  
Color temperature: 2200~6500K



1. Please check whether the input voltage of the constant voltage power supply is in accordance with the Lamps, and please check the connection of both the cathode and anode.
2. Use the product at rated voltage, over voltage usage will cause the damage.
3. Non-professional user cannot dismantle the Lamps directly, otherwise, it may cause fire and electric shock.
4. The working temperature is -20~45°C; Do not use the device to direct sunlight, moist and other high temperature area.
5. Please do not use Lamps around the mental area and high magnetic field, otherwise, it will badly affect the Use effect.

### Disclaimers

- \* This manual may contain inaccuracies or discrepancies of the product operations, or typographical errors. Our company will update the contents of this manual according to the improvements and changes of product functions, and regularly improve and update the software and hardware of products described in this manual. The updates will be shown in the latest edition of this manual without further notice.
- \* Due to the continuous adoption of new technologies by our company, the product parameters will be changed without any notice in prior.
- \* This manual is only for reference and guidance for customers. It does not guarantee that it is completely consistent with the actual product. The actual application is subject to the actual product.
- \* The parts, components and accessories mentioned in this manual do not represent the standard configuration of the product. The detailed configuration is subject to the packing list.
- \* All texts, tables and pictures in this manual are protected by the relevant national laws, and may not be used without permission by supplier.
- \* The copyright and right of the final interpretation of this manual are reserved by our company.